

A

R W

Signature

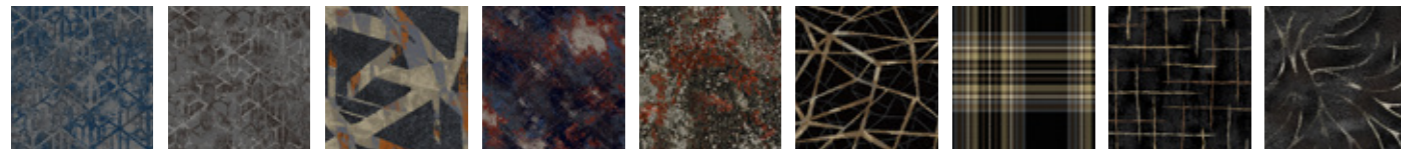
READY-TO-WEAR
BY SIGNATURE®

READY-TO-WEAR AXI

Signature Floors offers the enhanced performance of quality commercial grade Axminster carpet with the flexibility and convenience of our 'off the shelf' range.

The comprehensive range of designs from the experienced Signature Design Studio includes coloured graphics ideal for commercial installations. Ready-to-Wear AXI is suitable for hospitality, education, retail, office and any space where exceptional performance is required.

Ready-to-Wear AXI is the perfect choice for both refurbishments and new projects, offering a fast cost-effective solution, with great looks and long lasting value.



Alban 534 Astor 620 Thistle 270 Echo 127 Oxi 722 Atomic 616 Kilt 238 Axis 774 Twill 994



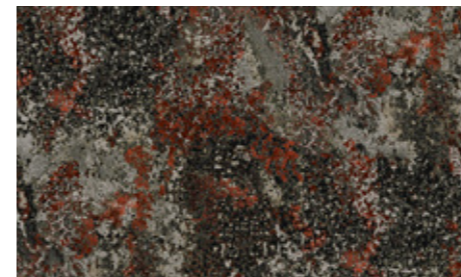
Halo 188 Nova 655 Bermuda 601 Ventura 510 Imprint 856 Keppel 890 Thatch 399 Opaz 765 Sultan 241

Cut pile carpets, particularly 'plush pile' will in some circumstances exhibit the condition known as 'shading, watermarking or pile reversal.' A cut pile carpet that has 'shaded' will show areas lighter or darker than the surrounding carpet pile. The variation is caused by the reflection of light from pile tufts which come to lay in different directions. It does not affect the wear or durability of the carpet and since it is beyond the control of the manufacturer, it is not recognised as a manufacturing flaw or fault.

All edges to be cut & seam sealed prior to installation.



Oxi 722



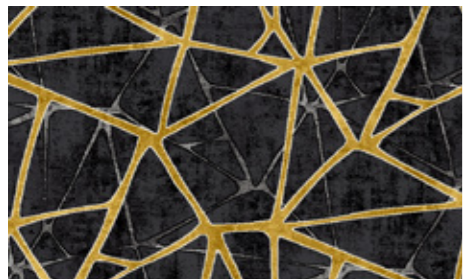
**80% wool &
20% anti-static nylon 6.6**

Carpet width: 364cm set match
Design width: 182cm drop match
Design length: 200cm

Quality: 40oz 2 ply 8mm
Yarn: 80% wool 20% nylon 6.6
Backing: polypropylene



Ventura 510

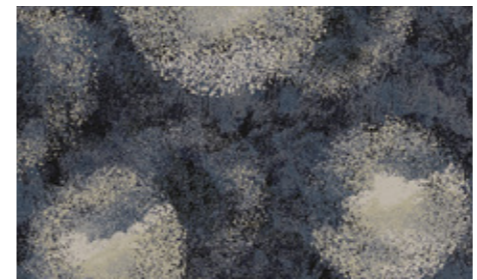


**80% wool &
20% anti-static nylon 6.6**

Carpet width: 364cm set match	Quality: 40oz 2 ply 8mm
Design width: 182cm drop match	Yarn: 80% wool 20% nylon 6.6
Design length: 200cm	Backing: polypropylene



Halo 188

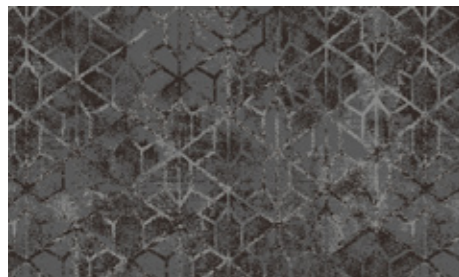


**80% wool &
20% anti-static nylon 6.6**

Carpet width: 364cm set match	Quality: 40oz 2 ply 8mm
Design width: 182cm drop match	Yarn: 80% wool 20% nylon 6.6
Design length: 183cm	Backing: polypropylene



Astor 620



**80% wool &
20% anti-static nylon 6.6**

Carpet width: 364cm set match
Design width: 182cm set match
Design length: 200cm

Quality: 40oz 2 ply 8mm
Yarn: 80% wool 20% nylon 6.6
Backing: polypropylene



Keppel 890



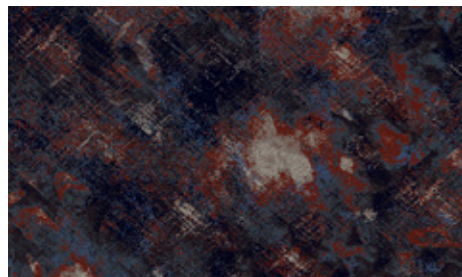
**80% wool &
20% anti-static nylon 6.6**

Carpet width: 364cm set match
Design width: 182cm set match
Design length: 160cm

Quality: 40oz 2 ply 8mm
Yarn: 80% wool 20% nylon 6.6
Backing: polypropylene



Echo 127

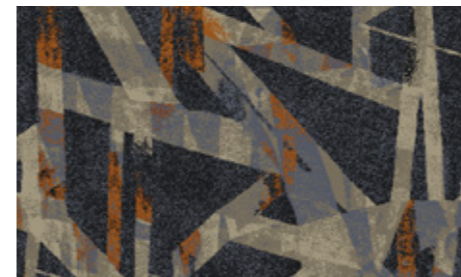


**80% wool &
20% anti-static nylon 6.6**

Carpet width: 364cm set match	Quality: 40oz 2 ply 8mm
Design width: 182cm set match	Yarn: 80% wool 20% nylon 6.6
Design length: 200cm	Backing: polypropylene



Thistle 270



**80% wool &
20% anti-static nylon 6.6**

Carpet width: 364cm set match	Quality: 40oz 2 ply 8mm
Design width: 182cm drop match	Yarn: 80% wool 20% nylon 6.6
Design length: 200cm	Backing: polypropylene



Imprint 856



**80% wool &
20% anti-static nylon 6.6**

Carpet width: 364cm set match	Quality: 40oz 2 ply 8mm
Design width: 182cm set match	Yarn: 80% wool 20% nylon 6.6
Design length: 180cm	Backing: polypropylene



Alban 534

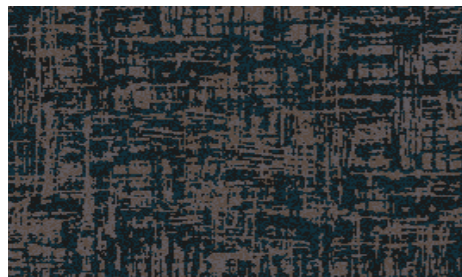


**80% wool &
20% anti-static nylon 6.6**

Carpet width: 364cm set match	Quality: 40oz 2 ply 8mm
Design width: 182cm set match	Yarn: 80% wool 20% nylon 6.6
Design length: 200cm	Backing: polypropylene



Thatch 399



**80% wool &
20% anti-static nylon 6.6**

Carpet width: 364cm set match
Design width: 91cm drop match
Design length: 112cm

Quality: 40oz 2 ply 8mm
Yarn: 80% wool 20% nylon 6.6
Backing: polypropylene



Bermuda 601



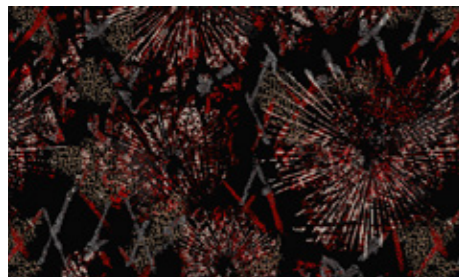
**80% wool &
20% anti-static nylon 6.6**

Carpet width: 364cm set match
Design width: 91cm drop match
Design length: 130cm

Quality: 40oz 2 ply 8mm
Yarn: 80% wool 20% nylon 6.6
Backing: polypropylene



Opaz 765



**80% wool &
20% anti-static nylon 6.6**

Carpet width: 364cm set match
Design width: 182cm set match
Design length: 175cm

Quality: 40oz 2 ply 8mm
Yarn: 80% wool 20% nylon 6.6
Backing: polypropylene



Sultan 241



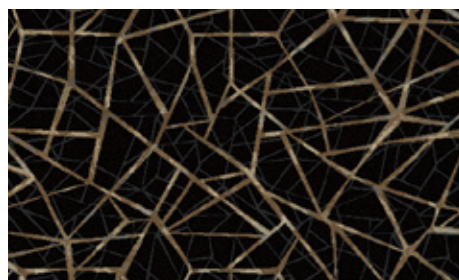
**80% wool &
20% anti-static nylon 6.6**

Carpet width: 366cm set match
Design width: 91cm set match
Design length: 90.5cm

Quality: 40oz 2 ply 8mm
Yarn: 80% wool 20% nylon 6.6
Backing: polypropylene



Atomic 616



**80% wool &
20% anti-static nylon 6.6**

Carpet width: 364cm set match	Quality: 40oz 2 ply 8mm
Design width: 182cm drop match	Yarn: 80% wool 20% nylon 6.6
Design length: 181cm	Backing: polypropylene



Kilt 238

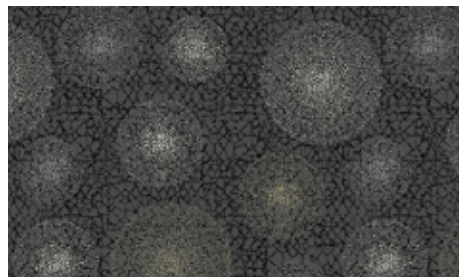


**80% wool &
20% anti-static nylon 6.6**

Carpet width: 366cm set match	Quality: 40oz 2 ply 8mm
Design width: 45cm set match	Yarn: 80% wool 20% nylon 6.6
Design length: 45cm	Backing: polypropylene



Nova 655



**80% wool &
20% anti-static nylon 6.6**

Carpet width: 364cm set match
Design width: 182cm set match
Design length: 180cm

Quality: 40oz 2 ply 8mm
Yarn: 80% wool 20% nylon 6.6
Backing: polypropylene



Twill 994



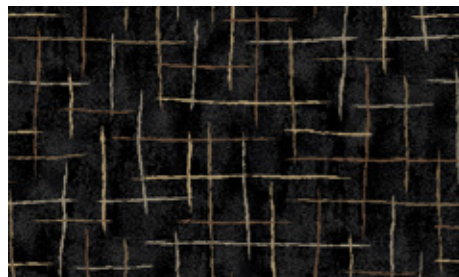
**80% wool &
20% anti-static nylon 6.6**

Carpet width: 364cm set match
Design width: 182cm drop match
Design length: 162cm

Quality: 40oz 2 ply 8mm
Yarn: 80% wool 20% nylon 6.6
Backing: polypropylene



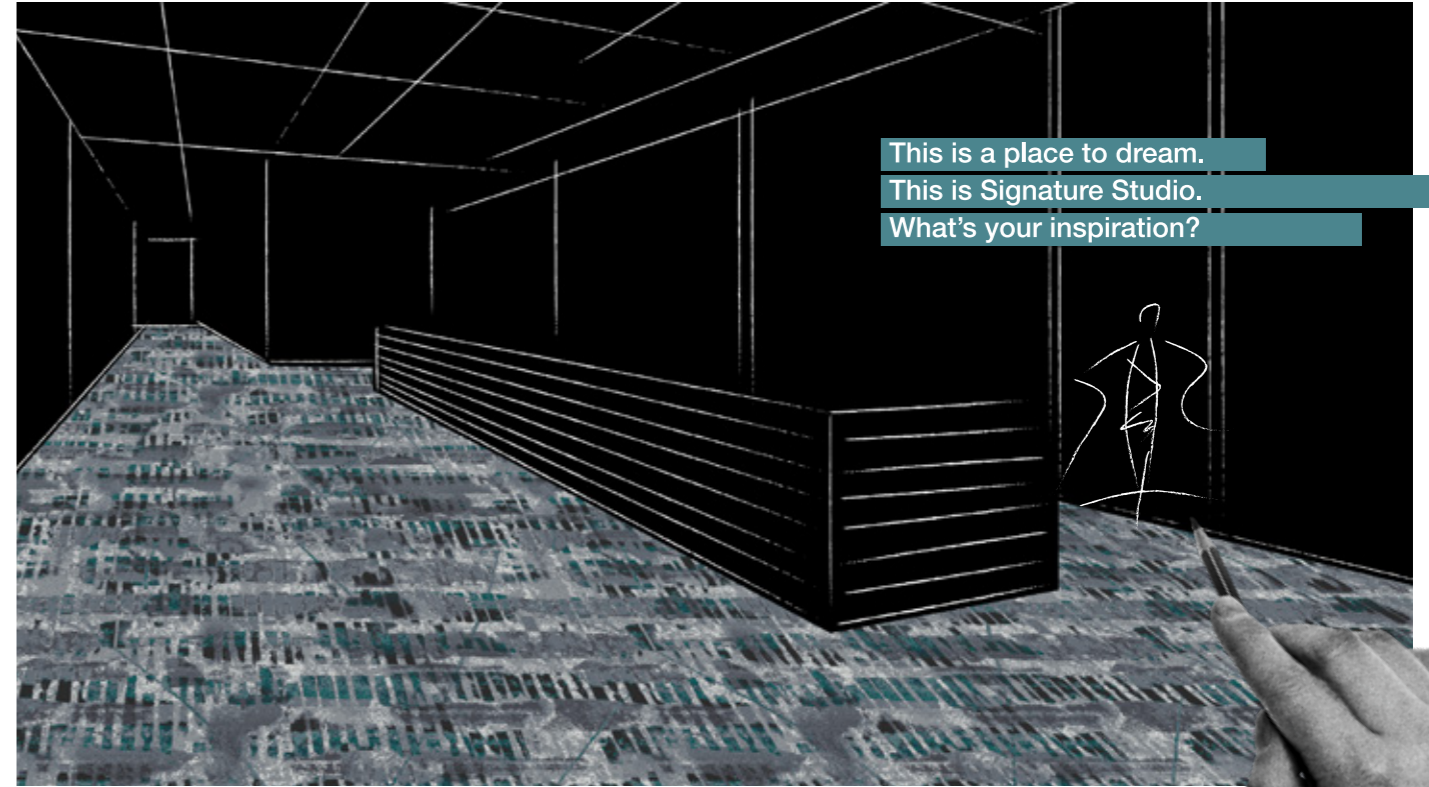
Axis 774



**80% wool &
20% anti-static nylon 6.6**

Carpet width: 364cm drop match
Design width: 121cm drop match
Design length: 140cm

Quality: 40oz 2 ply 8mm
Yarn: 80% wool 20% nylon 6.6
Backing: polypropylene



This is a place to dream.
This is Signature Studio.
What's your inspiration?

Design services

We are a leading designer and manufacturer of quality carpets for the Australian and New Zealand commercial market. We've been doing it for over a decade and we make finding the right carpet for your next project a breeze.

Our talented team of textiles designers are here to help. Simply chose one of our in-stock carpets and see how it looks in a range of 3D room visualisations and layouts that have been designed specifically for you.

signaturefloors.com.au/ready-to-wear

Bring your own inspiration

Signature Studio is a place to dream. Enter a space of ideas and exploration. Whether you are inspired by nature, excited by abstraction, or moved by the built world our talented team of designers are here to bring your designs to life, or let us inspire you with something new that meets your brief.

signaturefloors.com.au/studio

SIGNATURE
STUDIO



Signature Floorcoverings Pty Ltd
ABN 45 007 172 938

Australia:
PO BOX 1122, Epping VIC 3076, Australia
13 Wurundjeri Drive, Epping VIC 3076, Australia
Tel: 1800 150 554 Fax: 03 9401 0866
signaturefloors.com.au

New Zealand:
Unit A, 698 Great South Road Penrose, Auckland 1060, New Zealand
Tel: 0800 150 555 Fax: 09 414 2004
signaturefloors.co.nz

Colours and designs in this brochure might slightly vary from real product due to printing techniques. All edges to be cut & seam sealed prior to installation.

Specifications are subject to change without notice. ©signaturefloors 07/2021