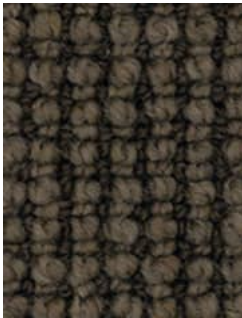
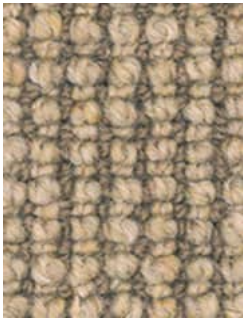




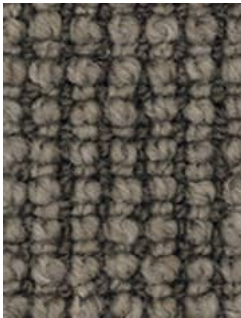
Ravine



290
Schist



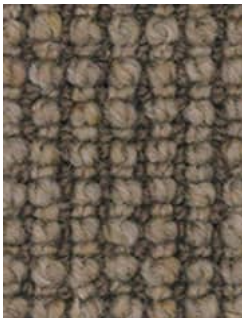
515
Crevice



725
Spillway



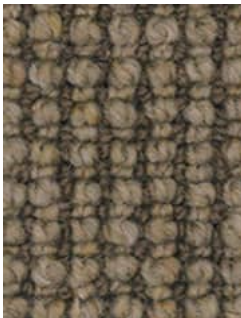
735
Fissure



755
Tussock



770
Gulf



930
Alpine Daisy

Ravine

Showcasing a subtly decorative linear pattern, Ravine's textured loop finish is available in a variety of contemporary colours, its contrasting two-toned palette evoking the ever-changing landscape of mountains and glens. Ravine is specifically designed to complement a multitude of interior stylings with each sophisticated neutral adapting equally to formal, casual, modern or traditional home settings.

Technical Data

Type:	Wool Carpet	Roll Width:	4m
Style:	Multi Level Loop	Pattern Repeat:	Not Applicable
Thickness:	11mm (+/- 1.0mm)mm	Colours:	7
Yarn:	New Zealand Wool	Country of Origin:	New Zealand
Weight:	44 oz	Installation Method:	Conventionally Laid
Gauge:	5/32nd gauge (25.2/10cm)		

Performance

ACCS Rating:	Residential Extra Heavy Duty - 6 Star Contract Medium Duty - 2 Star
---------------------	------------------------------------------------------------------------

Sustainability

Accreditation:	Manufactured under a quality and environmental system certified and complying with ISO 9001 and ISO 14001 by an accredited certification body.
Green Star:	Environmental Certification Scheme (ECS). Level 4 Maximum Points - Certificate #28105



Made in New Zealand



Multi-Level Loop Pile



Residential Extra Heavy Duty - 6 Star



Contract Medium Duty - 2 Star



ECS Level 4



Hypoallergenic



Thermal Insulation & Humidity Control



Insect Deterrent Treatment



4M



NZ Wool



Premium

All Godfrey Hirst carpets must be installed in accordance with the latest AS/NZS 2455: "Textile Floor Coverings - Installation Practice" standard and any relevant Godfrey Hirst New Zealand Installation Instructions. ~Test results and certificates are available on request.

Warranty: All Godfrey Hirst Carpets carry a warranty supported by New Zealand after sales service. The Godfrey Hirst Carpets warranty is applicable to all Godfrey Hirst Carpets, sold in New Zealand. "As a New Zealand manufacturer, we endorse and recognise all rights of the consumer under the Consumer Guarantees Act 1983 (the "CGA") and further agree to match any performance guarantee or warranty offered in the market place, at the time of purchase, on any product which is equivalent to ours, where that performance guarantee or warranty offers rights to the consumer in addition to those under the CGA". This means, when you choose a Godfrey Hirst Carpets product, you can be secure in the knowledge that your floor is backed by a comprehensive warranty which is easy to understand and supported by a leading New Zealand manufacturer.

For further information as to the warranty, installation, care and characteristic of this hard flooring please visit www.godfreyhirst.com or call 0800 500 210