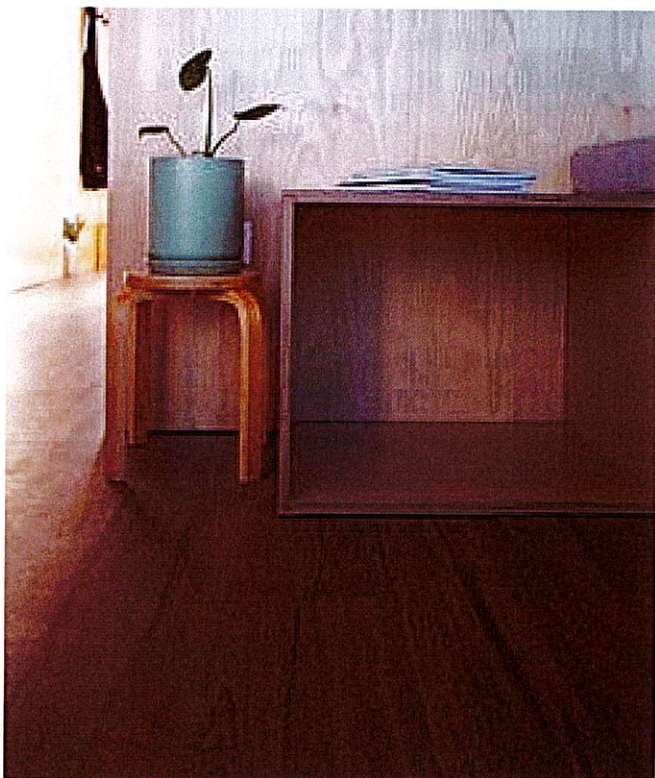


### DESIGNATED BUILDING PRODUCT: CLASS 1

#### DECLARATION

Quantum Group Importing and Distribution has provided this declaration to satisfy the provisions of Schedule 1(d) of the Building (Building Product Information Requirements) Regulations 2022.



#### PRODUCT NAME:

WISE Wood/Cork

#### LINE:

WISE Wood/Cork is from the WISE Inspire 700 collection of products.

#### IDENTIFIER:

WISE Wood/Cork

#### DESCRIPTION:

By using a unique engineered multilayer structure, which combines state of the art technology with the exclusive properties of cork, a higher standard in flooring is achieved, providing the perfect match between beauty, comfort and durability.

#### PRODUCT USE:

- Domestic, commercial overlay flooring.
- Suitable for all areas, including wet areas, kitchen areas (domestic).

#### COMPOSITION:

- Multi-layer consisting of cork, limestone (Cork Rigid Core), printed visual film or cork veneer, with non-PVC protective wear-layer.
- 2G angle/angle locking system.
- 4 Sides micro-beveled edges.

#### DIMENSIONS:

- 1225 x 190 x 7.3mm planks

## CHARACTERISTICS

- Timber effect visuals.
- Cork veneer visuals.
- R10 slip-resistance surface.
- Floating or glue down - any areas exposed to sunlight or natural light must be glued using the recommended adhesives.

## SCOPE OF USE

### WISE Wood/ Cork

- is suitable for use as an interior floor covering in residential and commercial installations.
- is suitable for med-high traffic areas.
- is able to be laid over existing flooring, ie tiles, with suitable preparation.
- is suitable for use with underfloor heating systems not exceeding 28 degrees Celsius.
- WISE Wood/Cork has a critical radiant flux exceeding 4.5kW/m<sup>2</sup> making it suitable for use in all buildings and areas of those buildings areas with C 3.4 (b) obligations.
- WISE Wood/Cork is suitable for use in wet areas such as bathrooms and laundries.
- WISE Wood/Cork is suitable for use in food preparation areas such as kitchens(Domestic only).
- WISE Wood/Cork is suitable for use on floors with vertical adjoining tenancies, in conjunction with other acoustic measures as a floor covering.

## CONDITIONS OF USE:

### WISE Wood/Cork

- is not suitable for exterior use.
- must be cleaned and maintained in accordance with the WISE Inspire 700 Cleaning and Maintenance Guide 2022.
- must be installed in accordance with the WISE Inspire 700 Installation Guide 2022.
- must be installed by a professional tradesperson with experience in glue-down flooring installations.

## RELEVANT BUILDING CODE CLAUSES:

B2 Durability — B2.3.1 (c)

C3 Fire affecting areas beyond the fire source — C3.4 (b)

E3 Internal moisture — E3.3.3, E3.3.5, E3.3.6

F2 Hazardous building materials — F2.3.1

G3 Food preparation and prevention of contamination — G3.3.2 (b)



## CONTRIBUTIONS TO COMPLIANCE:

**B2.3.1.(c)** WISE Wood/Cork meets the durability expectations of a floor covering in normal area of use both domestically and commercially. It carries a Limited Lifetime residential warranty, and a 10 year commercial warranty (Class 23).

**C3.4 (a)** - WISE Wood/Cork meets the minimum performance criteria under condition described in ISO9705: 1993. This products reaches Cfl-S2.

**C3.4 (b)** - WISE Wood/Cork meets the minimum critical radiant flux when tested to ISO9239-1:2010 exceeding 2.2kW/m<sup>2</sup>, making it suitable for use in all and areas of use except public sleeping areas where there is care or detention is provided.

**E3.3.3, 3.3.5, 3.3.6** - WISE Wood/Cork meets the performance regulations required for E3/ AS1 Internal Moisture in wet areas or near sanitary fixtures or appliances as an acceptable solution.

**F2.3.1** - WISE Wood/Cork does not emit any harmful concentrations at the surface which is exposed. WISE Wood/Cork reaches international accreditation in low VOC performance, ensuring a safe surface in any environment.

**G3.3.2 (a)** - WISE Wood/Cork is impervious and easily cleaned once sealed, and remains free from hazardous substances, making this product suitable for areas of food preparation (domestic only).

## SUPPORTING DOCUMENTATION:

The following additional documentation supports the above statements:

TITLE	VERSION	DOWNLOAD
WISE Inspire 700 - Critical Radiant Flux Report	03.2022	<a href="#">Click here to view or download</a>
WISE Inspire 700 – EPD Report	09.2020	<a href="#">Click here to view or download</a>
WISE Inspire 700 – Installation Instructions	12.2020	<a href="#">Click here to view or download</a>
WISE Inspire 700 – Warranty Document	12.2020	<a href="#">Click here to view or download</a>
WISE Inspire 700 – Maintenance & Care Guide	12.2020	<a href="#">Click here to view or download</a>
WISE Inspire 700 – Technical Data Sheet (TDS)	07.2019	<a href="#">Click here to view or download</a>
WISE Inspire 700 – E3 Moisture Test Reports	06.2023	<a href="#">Click here to view or download</a>

For further information supporting WISE Wood/Cork performance,  
please refer to our website: [www.qcg.co.nz](http://www.qcg.co.nz)

**CONTACT DETAILS:**

**Manufacture location:** Overseas

**Legal and trading name of manufacturer:** Amorim Cork Flooring (ACF)

**Legal and trading name of importer:** Quantum Group Importing and Distribution

**Importer address for service:** 20 Kaimanawa Street, Palmerston North, 4414

**Importer website:** [www.qcg.co.nz](http://www.qcg.co.nz)

**Importer NZBN:** 9429030697102

**Importer email:** [info@qcg.co.nz](mailto:info@qcg.co.nz)

**Importer phone number:** 0800 525 585

**RESPONSIBLE PERSON:**

As the responsible person as set out in Regulation 3, I confirm that the information supplied in this declaration is based on information supplied to the company as well as the company's own processes and is therefore to the best of my knowledge, correct.

I can also confirm that WISE Wood/Cork is not subject to a warning or ban under s26 of the Building Act.

Signed for and on behalf of Quantum Group Importing and Distribution:

Signed: \_\_\_\_\_

**Larry Harrison**

Director

September 2023

**QUANTUM GROUP IMPORTING AND DISTRIBUTION**

20 Kaimanawa Street, Palmerston North, 4414, New Zealand

0800 525 585 | [www.qcg.co.nz](http://www.qcg.co.nz)

**APPENDIX:**

**Note:** The below appendix includes information relating to BPIR Ready.

Publishing this information is not a requirement under BPIR. Its inclusion here is to provide a reference for how this BPIR summary was generated as well as to help summary creators understand the performance clauses suggested by BPIR Ready.



## BPIR READY SELECTIONS

### CATEGORY: FLOOR COVERINGS

	YES	NO
Use on access routes		X
Use in areas with floor surface fire obligations	X	
Use in wet areas	X	
Use in food preparation areas	X	
Part of a system for acoustic performance		X

### BUILDING CODE PERFORMANCE CLAUSES:

#### B2 Durability

##### B2.3.1

Building elements must, with only normal maintenance, continue to satisfy the performance requirements of this code for the lesser of the **specified intended life** of the building, if stated, or:

(c) 5 years if:

- i. the building elements (including services, linings, renewable protective coatings, and fixtures) are easy to access and replace, and
- ii. failure of those building elements to comply with the building code would be easily detected during normal use of the building.

#### C3 Fire affecting areas beyond the fire source

##### C3.4

#### Surface Linings

(b) floor surface materials in the following areas of buildings must meet the performance criteria specified below:

Area of building Minimum critical radius flux when tested to ISO 9239-1: 2010	Buildings not protected with an automatic fire sprinkler system.	Buildings protected with an automatic fire sprinkler system
Sleeping areas and exitways in buildings where care or detention is provided	4.5 kW/m <sup>2</sup>	2.2 kW/m <sup>2</sup>
Exit ways in all other buildings	2.2 kW/m <sup>2</sup>	2.2 kW/m <sup>2</sup>
Firecells accommodating more than 50 persons	2.2 kW/m <sup>2</sup>	1.2 kW/m <sup>2</sup>
All other occupied spaces except household units	1.2 kW/m <sup>2</sup>	1.2 kW/m <sup>2</sup>

## E3 Internal moisture

### E3.3.3

Floor surfaces of any space containing sanitary fixtures or sanitary appliances must be impervious and easily cleaned.

### E3.3.5

Surfaces of **building elements** likely to be splashed or become contaminated in the course of the intended use of the building, must be **impervious** and easily cleaned.

### E3.3.6

Surfaces of **building elements** likely to be splashed must be constructed in a way that prevents water splash from penetrating behind linings or into **concealed spaces**.

## F2 Hazardous building materials

### F2.3.1

The quantities of gas, liquid, radiation or solid particles emitted by materials used in the construction of buildings, shall not give rise to harmful concentrations at the surface of the material where the material is exposed, or in the atmosphere of any space.

## G3 Food preparation and prevention of contamination

### G3.3.2

#### (b)

All **building elements** constructed with materials which are free from hazardous substances which could cause contamination to the **building** contents.