



**Kingswood™ 1.5**  
*Hybrid Plank*

# Kingswood™ 1.5

## Hybrid Plank

Kingswood™ 1.5 offers authentic hardwood designs, suitable for both modern and classic style homes.

Combining all the desired flooring features, Kingswood™ 1.5 Hybrid offers great cleanability, low maintenance, and exceptional durability for everyday wear. Guaranteed with a 25 year residential warranty\*, Kingswood™ 1.5 is built to stand up to everyday scuffs, scratches, and stains, ideal for households with pets and children.

### Features & Benefits

CeraShield™ Surface Technology with ceramic bead ensures a low maintenance home with improved scratch, scuff and stain resistance.

A-LITE Core Technology™ gives perfect stability and uses 20% less material than standard SPC hybrid products. Installation becomes easier with the lighter weight structure, paired with the industry's most reliable locking system.

XFD Acoustic Backing™ offers a comfortable floor, absorbing noise and echo to create a quieter living space.



**Latest Technology**  
20% lighter than standard hybrid products with A-Lite Core Technology™.



**CeraShield™ Protection**  
Ceramic bead surface for scuff, stain, and dent resistance.



**Pet Friendly**  
Resistant to scratches and stains, suitable for all household pets. ^



**Waterproof Surface**  
Not affected by spills, suitable for kitchens. ^



**Kid Friendly**  
Low maintenance, resistant to spills and stains, wet moppable.



**Residential Warranty**  
\*25 year residential warranty. Commercial warranty on request.



**Acoustic Rating 6 Star**  
Suitable for multi-level residential applications.



**Stain Resistant**  
PUR Coating for improved stain resistance, ideal for kitchens.

^Subject to proper installation and care and maintenance as set out in the Armstrong Flooring Installation Instructions and Cleaning and Care Instructions.

\*All warranties are in addition to any rights consumers may have under Australian and New Zealand consumer laws. Terms and conditions apply - for full information in respect to the scope of the residential warranty, please see [armstrongflooring.au](http://armstrongflooring.au) or [armstrongflooring.co.nz](http://armstrongflooring.co.nz) or contact our Head Office, or for the commercial warranty, contact your Armstrong Flooring representative.



Kingswood™ 1.5

## Euro Oak

---

A warm blonde timber design that will elevate any coastal or contemporary style home.





Kingswood™ 1.5  
1500 x 182 x 6.5 mm



Chardonnay Oak | 105



Silver Oak | 110



Euro Oak | 150



Malt Oak | 175



Jamieson Oak | 130



Booker Oak | 140



Cocoa Oak | 190



Somerset Blackbutt | 215

Kingswood™ 1.5  
1500 x 182 x 6.5 mm



Blackbutt Traditional | 250



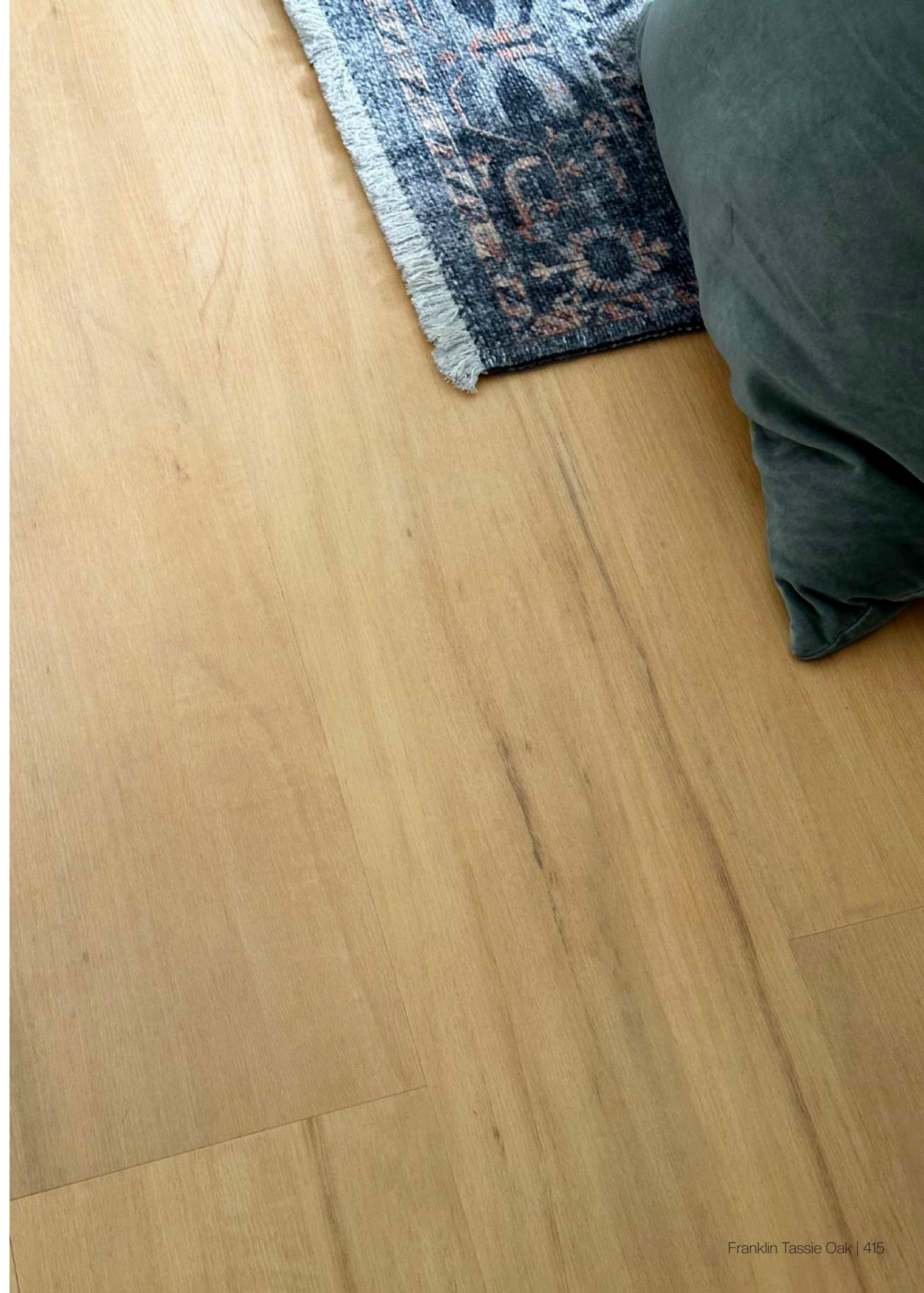
Spotted Gum Traditional | 360



Franklin Tassie Oak | 415



Tasmanian Hardwood Classic | 450



# Kingswood™ 1.5

## Product Specifications

### Product Classification

Type of floor covering	EN/ISO 10582	Hybrid Flooring
Classification	ISO 10874	Domestic Heavy Duty (23)
		Commercial Heavy Duty (33)
Warranty*	Domestic	25 years
	Commercial - available upon request	15 years

\*All warranties are in addition to any rights consumers may have under Australian and New Zealand consumer laws. Terms and conditions apply - for full information in respect to the scope of the residential warranty, please see [armstrongflooring.au](http://armstrongflooring.au) or [armstrongflooring.co.nz](http://armstrongflooring.co.nz) or contact our Head Office, or for the commercial warranty, contact your Armstrong Flooring representative.

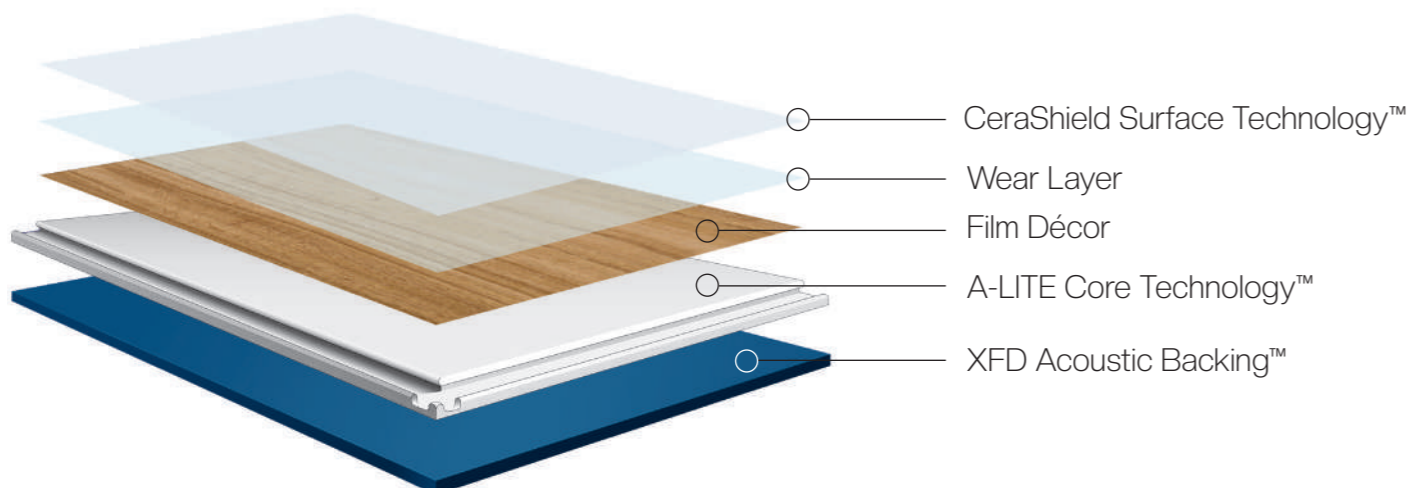
### Product Structure

Dimensions (mm)	1500 x 182 x 6.5 mm
Surface treatment	CeraShield™ Surface Technology
Wear layer (mm)	0.55 mm
Bevel	Micro
Core Type	<b>A</b> Lite® Core Technology™
Backing Type	1.50 mm XFD Acoustic Backing™
Locking System	Angle/Angle - Side Tap (Manufactured under license from Unilin BV)

### Packaging

Planks/carton	8
m <sup>2</sup> /carton	2.18
Kg/carton	19.7

### Product Structure



### Product Testing

		Standard	Requirement	Result
Slip	Wet Pendulum	AS4586	-	P3
Fire	Critical radiant flux	AS ISO 9239-1	≥ 4.5kW/m <sup>2</sup>	9.9kW/m <sup>2</sup>
	Smoke development rate	AS ISO 9239-1	≤ 750%.minutes	85%.minutes
Acoustic	Impact sound insulation <small>(150mm concrete slab with drop ceiling - 288mm cavity, 50mm glass wool insulation, 12mm gypsum board)</small>	ISO 10140-3 ISO 717-2	≤ 62dB	Ln,w = 40dB (6 Star)
	Impact insulation class <small>(150mm concrete slab with drop ceiling - 288mm cavity, 50mm glass wool insulation, 12mm gypsum board)</small>	ASTM E989-21	-	IIC = 70
	Improvement of impact sound insulation <small>(200mm concrete slab)</small>	ISO 10140-1 ISO 717-2	-	ΔLw = 20dB
Surface	Abrasion	EN660-1	Group P	Group T
	Castor chair (no IXPE)	ISO 4918	≥ 25,000	25,000
	Martindale (wear resistance)	EN16094	MSR-B2	MSR-B1
	UV adhesion	-	≥ 2	2
	Colour fastness	ISO 105-B02	≥ 6	6
Core	Deviation on end click	EN428	+/- 0.12mm	0.00mm
	Dimensional tolerance	EN427	Length ± 0.30mm	Length 0.01mm
			Width ± 0.12mm	Width 0.01mm
	Peel strength	ISO 24345	> 50N	112N
	Shrink-vertical % (80°C 6hr)	ISO 23999	≤   0.25%	0.069%
	Shrink-horizontal % (80°C 6hr)	ISO 23999	≤   0.25%	0.044%
	Curling (80°C 6hr)	ISO 23999	≤   0.25%	0.09mm
	Click Lock Strength	EN431	≥ 110N	Horizontal: 189N
				Vertical: 201N
Residual indentation	ISO 24343	≤ 0.4mm (with IXPE)	0.09mm	

### Sustainability

Global GreenTag GreenRate Level A



Learn more

[www.armstrongflooring.au/kingswood1.5](http://www.armstrongflooring.au/kingswood1.5)



---

**Armstrong**Flooring™

29-39 Mills Road, Braeside VIC 3195

1800 632 624

[customerservices@armstrongflooring.au](mailto:customerservices@armstrongflooring.au)

[www.armstrongflooring.au](http://www.armstrongflooring.au)